

Lincoln School Composting

Volunteer Information



In this Slide Deck

- About CORI Forms
- Meet Our Composting Station
- Volunteer Responsibilities
- What is Compostable/Not Compostable?
- What Happens to Leftover Items?
- How Do I Sign Up?
- Who Can I ask for Help?
- Composting at Home
- Thanks to the Lincoln School Foundation

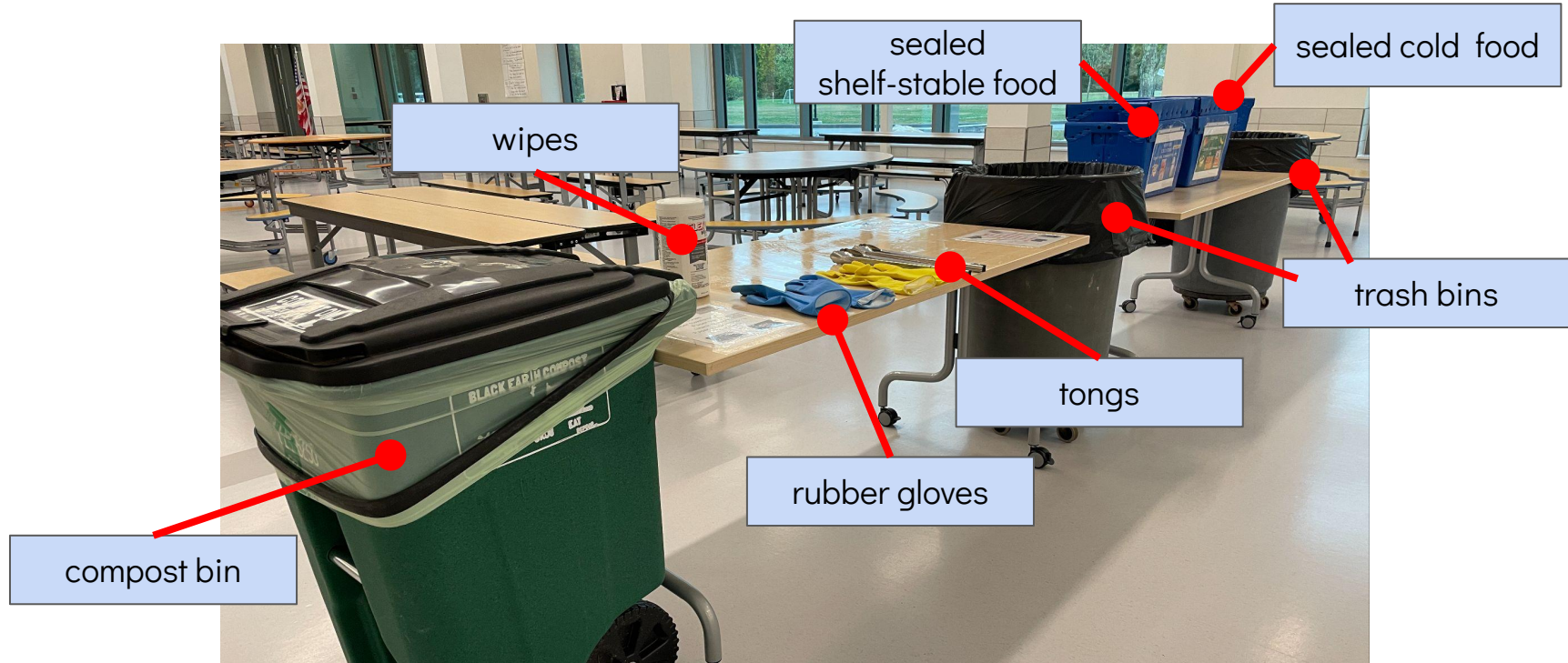


What is a CORI?

How & When* Do I Get One?

- A CORI is a background check required for volunteers to ensure the safety of students. It helps schools confirm that volunteers have no criminal history that could pose a risk to children. The form is a standard safety measure to protect both students and volunteers.
- A CORI is good for 3 Years. If you have had a CORI done with LPS in the past, you can call 781-259-9404 to verify your CORI status.
- If you don't yet have a CORI on file with LPS, please stop by the school office ASAP with your driver's license. A secretary will give you a CORI form to complete and make a copy of your license.
- *A CORI will need to be done at least one week before your scheduled volunteer time to ensure you are all set to volunteer.

Meet Our Composting Station



This station is set up in the middle of the Dining Commons and serves both the K-4 & 5-8 lunch sides.

What Do I Need to Do?

- ❑ Arrive at your assigned time, sign in at the office, put on a visitor badge
- ❑ Proceed to the Dining Commons
- ❑ Help direct / teach students who are unsure which items should go to compost/save/trash
- ❑ Monitor students as they sort their tray
 - ❑ Compost
 - ❑ Trash
 - ❑ Keep for the food pantry
- ❑ Watch out for things going in the wrong bin... ***especially*** plastic in the compost
Students (or you) need to retrieve incorrect items with tongs and put them in the right place
- ❑ Help stack compostable trays to go into the compost in a large group at the END of lunch

What Else Do I Need to Do?

At the end of your volunteer time:

- ☐ Place all the stacked trays in the compost bin
- ☐ Wipe the compost station tables
- ☐ Transfer cold saved food items to refrigerator
- ☐ Wash the tongs
- ☐ Wash the gloves
- ☐ Transfer shelf stable items to boxes in the K wing
- ☐ Sign out at the office
- ☐ Return your badge



What Goes in the Green Compost Bins?

If it came from the Earth... it can go back to the Earth!

- ALL FOOD: Bones, uneaten food, banana peels, apple cores, etc.
- Plain paper napkins / paper towels
- Wooden ice cream sticks
- [Complete list from Black Earth Compost HERE](#)

Stack the paper trays on the table and place them in the bin as a BIG STACK at the end of the final lunch. This saves us space in the bins DURING lunches.



What Can Go in the Donation Bins?

Any unopened/sealed food or fresh fruit with a peel/skin

Shelf Stable Items

- Craisins
- Cereal
- Sauces/Dips
- Whole Fruits
- Food in original unopened package



Perishable Items

- Milk
- Yogurt
- Cheese Sticks
- Food in original unopened package



We cannot save items that have been heated (waffle/pancakes)

What Goes in the Trash?

Everything Else!

- Food Wrappers
- Plastic utensils
- Red/White Paper “boats”
- Milk cartons/milk
- Plastic containers
- Plastic Straws
- Wet Wipes



Can We Recycle Cans?

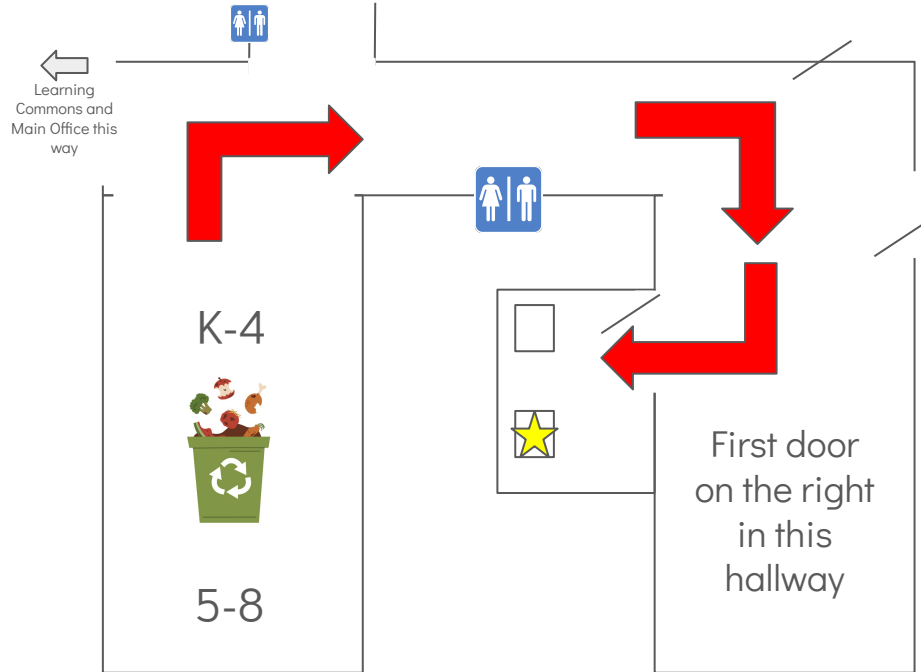
Sure CAN!

- Place aluminum cans in the blue bin on the “keep” table so they can be recycled



Where Do I Put the Sealed Cold Items?

In the LEFT Refrigerator in the Staff Room



Where Do I Put Sealed Shelf Stable Items?

On the Shelves in the Teacher Workroom Near the Refrigerator



Where and How Do I Wash the Gloves and Tongs?

In the sink in the staff room near the 5th Grade



Please place the cleaned gloves and the tongs on the table at the end of your shift.

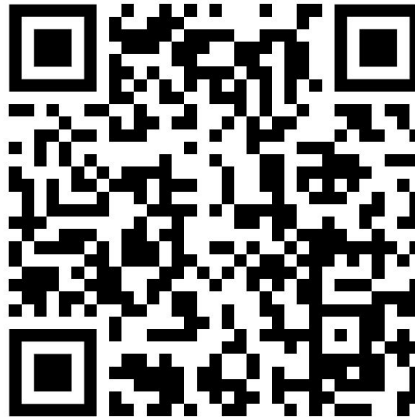
How Can I Easily Move Things?

With the Green Team Composting Cart!



The cart is housed in a closet in the Dining Commons... If you don't see it, a custodian can help!

How Do I Sign Up?



<https://tinyurl.com/bdetb7uu>

If you are unable to make your shift on a given day, please try to find a replacement from the volunteer list at the top of the SignUp Genius form. If you can't find a replacement, please let a member of the green team know.

Have a Question or Comment?

Reach Out to the Lincoln School Green Team!



[Gwen Blumberg](#)
School Librarian



[Nicole McDonagh](#)
Kindergarten Teacher

Emily Haslett
Lincoln Community Member & Volunteer
emhaslett@gmail.com

Candace Pearson
Lincoln School Parent & Volunteer
candace.blodgett@gmail.com

Want to Compost at Home?



www.blackearthcompost.com



Our school
earns
\$10 for
every
new
customer!

SUPPORT OUR SCHOOL AND COMPOST
LIKE YOUR KIDS LIVE HERE



Enter our school name in the sign up referral field and we'll earn \$10.



EARTH DAY EVERYDAY

SIGN UP AT BLACKEARTHCOMPOST.COM



COMPOST ALL FOOD SCRAPS



FREE BAG OF COMPOST

Discounts on delivery of bulk
compost, and soil blends.

PICK-UP PLANS
\$16.99 / MONTH OR
\$89.99 / 6 MONTHS

Special Thanks to the Lincoln School Foundation
for their initial support launching this program!



Thank YOU for Volunteering!

